

Violin - Foundation Level

Metronome: ♩ = 60–69

Memorized.

Student chooses one:

A or D major scale, starting on open string. No arpeggio required.

Bowing: No slurs. Whole or half bows.

A Major



D Major



Violin - Level 1

Metronome: ♩ = 60–69

Memorized.

1. Student chooses one:

One-octave major scale and tonic arpeggio in A or D, starting on open string.

2. Student plays:

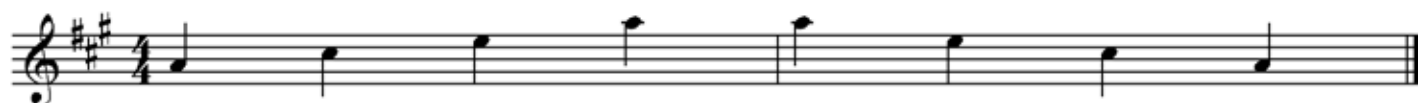
Two-octave major scale and tonic arpeggio in G.

Bowing for scales: separate quarter notes or slur 2 eighth notes.

Bowing for arpeggios: separate quarter notes.

Use whole bows on all.

A Major



D Major



G Major



Violin - Level 2

Metronome: ♩ = 60–69

Memorized.

1. Student chooses one:

One-octave major scale and tonic arpeggio in B♭ (lower octave) or F.

2. Student chooses one:

Two-octave major scale and tonic arpeggio in G, A, or C.

3. Student plays:

One-octave melodic minor scale and tonic arpeggio in Dm.

Bowing for scales: slur 2 eighth notes.

Bowing for arpeggios: separate quarter notes.

Use whole bows on all.

B♭ Major



F Major



G Major



A Major



Violin - Level 2 p. 2

C Major

Musical notation for C Major, 4/4 time signature. The first staff contains a melodic line with eighth and sixteenth notes, including slurs and ties. The second staff contains a bass line with quarter and eighth notes, including a double bar line in the middle of the staff.

D minor

Musical notation for D minor, 4/4 time signature. The staff contains a melodic line with eighth and sixteenth notes, including slurs and ties. The key signature has one flat (Bb).

Violin - Level 3

Metronome: ♩ = 60-69

Memorized.

1. Student chooses one:

Two-octave major scale and tonic arpeggio in A, B \flat , C, or D. Shifting or fixed position.

2. Student chooses one:

One-octave major scale and tonic arpeggio in A \flat (lower octave), E \flat , or E.

3. Student chooses one:

One-octave melodic minor scale and tonic arpeggio in Gm, Dm, or Am.

Start on open string

Bowing for scales: slur 2 eighth notes or 4 eighth notes.

Bowing for arpeggios: slur 2 or 3 quarter notes.

Use whole bows on all.

A Major

The A Major section consists of two staves of music. The first staff shows a two-octave major scale in 4/4 time, starting on the open A string (A4) and ending on the A5. The second staff shows a tonic arpeggio in 4/4 time, starting on the open A string and moving up to A5. The second half of the second staff is marked 'Alternate bowing' and is in 3/4 time, showing a descending arpeggio from A5 to A4.

B \flat Major

The B \flat Major section consists of two staves of music. The first staff shows a two-octave major scale in 4/4 time, starting on the open B \flat string (B \flat 4) and ending on the B \flat 5. The second staff shows a tonic arpeggio in 4/4 time, starting on the open B \flat string and moving up to B \flat 5. The second half of the second staff is marked 'Alternate bowing' and is in 3/4 time, showing a descending arpeggio from B \flat 5 to B \flat 4.

C Major

The C Major section consists of two staves of music. The first staff shows a two-octave major scale in 4/4 time, starting on the open C string (C4) and ending on the C5. The second staff shows a tonic arpeggio in 4/4 time, starting on the open C string and moving up to C5. The second half of the second staff is marked 'Alternate bowing' and is in 3/4 time, showing a descending arpeggio from C5 to C4.

Violin - Level 3 p. 2

D Major

Two staves of musical notation for D Major. The first staff is in 4/4 time and contains two measures of eighth-note patterns with slurs. The second staff is in 3/4 time and contains two measures of eighth-note patterns with slurs. The text "Alternate bowing" is written above the second staff.

A \flat Major

Two staves of musical notation for A-flat Major. The first staff is in 4/4 time and contains two measures of eighth-note patterns with slurs. The second staff is in 3/4 time and contains two measures of eighth-note patterns with slurs. The text "Alternate bowing" is written above the second staff.

E \flat Major

Two staves of musical notation for E-flat Major. The first staff is in 4/4 time and contains two measures of eighth-note patterns with slurs. The second staff is in 3/4 time and contains two measures of eighth-note patterns with slurs. The text "Alternate bowing" is written above the second staff.

E Major

Two staves of musical notation for E Major. The first staff is in 4/4 time and contains two measures of eighth-note patterns with slurs. The second staff is in 3/4 time and contains two measures of eighth-note patterns with slurs. The text "Alternate bowing" is written above the second staff.

Violin - Level 3 p. 3

G minor

Musical notation for G minor. The first staff is in 4/4 time and contains four measures of music with slurs. The second staff is in 3/4 time and contains two measures of music with slurs. The text "Alternate bowing" is written above the second staff.

D minor

Musical notation for D minor. The first staff is in 4/4 time and contains four measures of music with slurs. The second staff is in 3/4 time and contains two measures of music with slurs. The text "Alternate bowing" is written above the second staff.

A minor

Musical notation for A minor. The first staff is in 4/4 time and contains four measures of music with slurs. The second staff is in 3/4 time and contains two measures of music with slurs. The text "Alternate bowing" is written above the second staff.

Violin - Level 4

Metronome: ♩ = 60–69

Memorized.

1. Student chooses one:
Two-octave major scale and tonic arpeggio in A \flat , B \flat , or B.
2. Student chooses one:
Two-octave major scale and tonic arpeggio in E \flat , E, or F.
3. Student chooses one. Play both melodic and harmonic versions:
Two-octave minor scale and tonic arpeggio in Gm, Dm, or Am.
4. Student plays:
Two-octave G chromatic scale. Slur 2 eighth notes.

Bowing for major and minor scales: slur 4 eighth notes.

Bowing for arpeggios: slur 2 eighth notes or 3 triplet eighth notes.

Whole bows on all.

A \flat Major

Two staves of musical notation for A \flat Major in 4/4 time. The first staff shows the melodic scale and tonic arpeggio. The second staff shows the harmonic scale and tonic arpeggio, with the instruction "Alternate bowing" written above the second measure.

B \flat Major

Two staves of musical notation for B \flat Major in 4/4 time. The first staff shows the melodic scale and tonic arpeggio. The second staff shows the harmonic scale and tonic arpeggio, with the instruction "Alternate bowing" written above the second measure.

B Major

Two staves of musical notation for B Major in 4/4 time. The first staff shows the melodic scale and tonic arpeggio. The second staff shows the harmonic scale and tonic arpeggio, with the instruction "Alternate bowing" written above the second measure.

Violin - Level 4 p. 2

E \flat Major

Two staves of music in E \flat Major, 4/4 time. The first staff contains a melodic line with eighth-note patterns and slurs. The second staff continues the melody and includes the instruction "Alternate bowing" above the notes.

E Major

Two staves of music in E Major, 4/4 time. The first staff contains a melodic line with eighth-note patterns and slurs. The second staff continues the melody and includes the instruction "Alternate bowing" above the notes.

F Major

Two staves of music in F Major, 4/4 time. The first staff contains a melodic line with eighth-note patterns and slurs. The second staff continues the melody and includes the instruction "Alternate bowing" above the notes.

G minor

Three staves of music in G minor, 4/4 time. The first staff is labeled "Melodic" and contains a melodic line with eighth-note patterns and slurs. The second staff is labeled "Harmonic" and contains a harmonic line with eighth-note patterns and slurs. The third staff continues the melody and includes the instruction "Alternate bowing" above the notes.

Violin - Level 4 p. 3

D minor

Melodic

Harmonic

Alternate bowing

This section contains three staves of music in D minor. The first staff is labeled 'Melodic' and features a sequence of eighth notes with various slurs and accents. The second staff is labeled 'Harmonic' and follows a similar melodic pattern. The third staff is labeled 'Alternate bowing' and includes a double bar line, indicating a change in bowing technique for the subsequent eighth-note passages.

A minor

Melodic

Harmonic

Alternate bowing

This section contains three staves of music in A minor. The first staff is labeled 'Melodic' and shows eighth-note patterns with slurs. The second staff is labeled 'Harmonic' and mirrors the melodic structure. The third staff is labeled 'Alternate bowing' and includes a double bar line to denote the start of the alternate bowing exercise.

G chromatic

This section consists of two staves of music in G chromatic. The first staff shows a sequence of eighth notes with sharp and natural accidentals, moving up the scale. The second staff shows a sequence of eighth notes with flat and natural accidentals, moving down the scale. Both staves include slurs and accents to guide the performer.

Violin - Level 5

Metronome ♩ = 60–72

Memorized.

1. Student chooses one:

Two-octave major scale in A \flat , B, D \flat , E \flat , E, or F.

Slur 4 eighth notes or 8 sixteenth notes.

2. Student chooses one:

Three-octave major scale in G, A, B \flat , or C.

Slur 3 triplet eighth notes or 4 eighth notes.

3. Student chooses one:

Two-octave minor scale in G \flat , A \flat , B \flat , or D \flat .

Play both melodic and harmonic versions.

Slur 4 eighth notes.

4. Student plays:

Two-octave G chromatic scale. Slur 2 or 4 eighth notes.

Tonic arpeggios are required for all major and minor scales.

Bowing for arpeggios: Slur 3 triplet eighth notes or 4 eighth notes.

A \flat Major

Three staves of musical notation for the A \flat Major scale. The first staff shows the scale with slurs over groups of four eighth notes. The second staff is labeled "Alternate bowing" and shows the scale with slurs over groups of four eighth notes. The third staff is also labeled "Alternate bowing" and shows the scale with slurs over groups of four eighth notes.

B Major

Three staves of musical notation for the B Major scale. The first staff shows the scale with slurs over groups of four eighth notes. The second staff is labeled "Alternate bowing" and shows the scale with slurs over groups of four eighth notes. The third staff is also labeled "Alternate bowing" and shows the scale with slurs over groups of four eighth notes.

Violin - Level 5 p. 2

D \flat Major

Alternate bowing

Alternate bowing

E \flat Major

Alternate bowing

Alternate bowing

E Major

Alternate bowing

Alternate bowing

Violin - Level 5 p. 3

F Major



Alternate bowing



Alternate bowing



G Major



Alternate bowing



Alternate bowing



A Major



Alternate bowing



Alternate bowing



Violin - Level 5 p. 4

B \flat Major

Alternate bowing

Alternate bowing

C Major

Alternate bowing

Alternate bowing

G minor

Melodic


Harmonic

Alternate bowing


Violin - Level 5 p. 5

A minor


Melodic



Harmonic



Alternate bowing



The A minor section consists of three staves. The first staff is labeled 'Melodic' and contains a sequence of eighth notes with slurs. The second staff is labeled 'Harmonic' and contains a sequence of eighth notes with slurs. The third staff is labeled 'Alternate bowing' and contains a sequence of eighth notes with slurs, including a double bar line in the middle.

B minor

Melodic



Harmonic



Alternate bowing



The B minor section consists of three staves. The first staff is labeled 'Melodic' and contains a sequence of eighth notes with slurs. The second staff is labeled 'Harmonic' and contains a sequence of eighth notes with slurs. The third staff is labeled 'Alternate bowing' and contains a sequence of eighth notes with slurs, including a double bar line in the middle.

D minor

Melodic



Harmonic



Alternate bowing



The D minor section consists of three staves. The first staff is labeled 'Melodic' and contains a sequence of eighth notes with slurs. The second staff is labeled 'Harmonic' and contains a sequence of eighth notes with slurs. The third staff is labeled 'Alternate bowing' and contains a sequence of eighth notes with slurs, including a double bar line in the middle.

G chromatic



The G chromatic section consists of two staves. The first staff contains a sequence of eighth notes with slurs, including a double bar line in the middle. The second staff contains a sequence of eighth notes with slurs, including a double bar line in the middle.